



Fairwater House, Fulham
SW6

GARTON JONES.COM



Fairwater House, Fulham , SW6

GARTON JONES.COM

13 Park Street
Chelsea Creek
London
SW6 2FS

Sales +44 (0) 20 7824 7090
paul@gartonjones.com
www.gartonjones.com

£900 Per Week

An elegant two-bedroom apartment circa 850sqft (79sqm) which is offered furnished with high end luxury furniture and decorated to a high standard. The apartment comprises of a spacious lounge with access to a patio, open plan kitchen with integrated appliances, two double bedrooms and access to a luxury bathroom. Chelsea Creek is situated in one of London's most elegant dockside developments, which combines luxurious central London living whilst overlooking tranquil waterways, tree lined avenues and landscape gardens. Residents benefit from 24 Hour Concierge, Spa and fitness suite with Swimming pool. King's Road and Chelsea Harbour are easily accessible and Imperial Wharf Station is just a few minutes' walk.

** Please note the furniture may differ or not be included to that shown in current photos**

5 Weeks Security Deposit
12 Month Tenancy
Council Tax — London borough of
Hammersmith & Fulham — Band G
EPC C (75)

EPC certificate available on request.

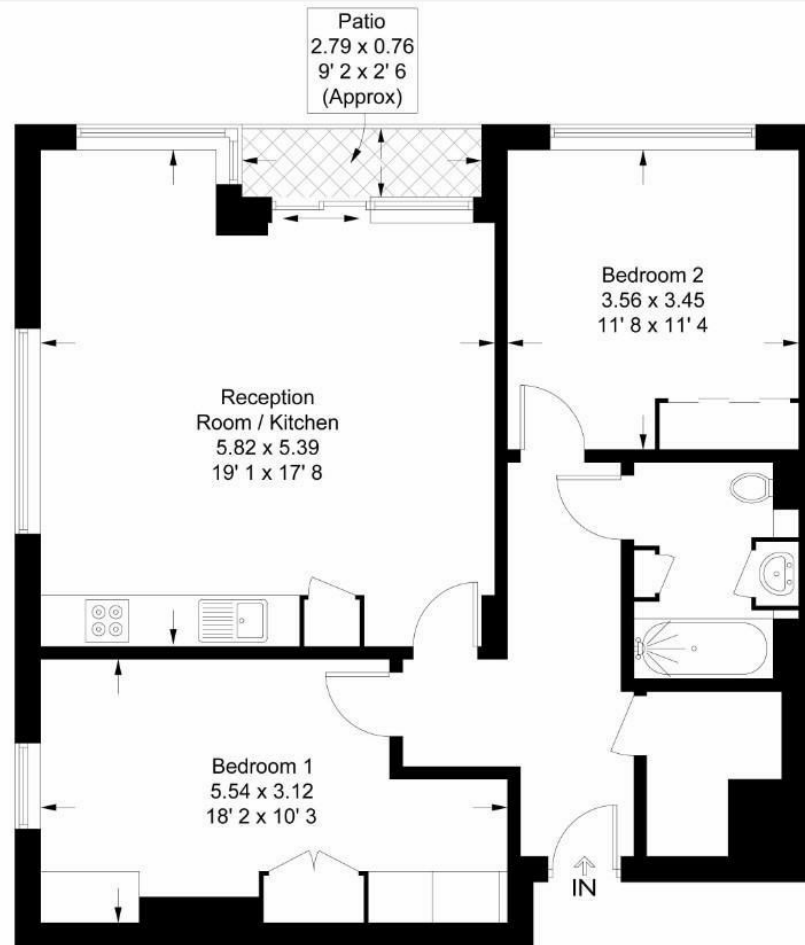
- Stunning Two Bedroom Apartment
- Circa 850sqft (79sqm)
- Luxury Furniture
- Open Plan Kitchen
- Patio
- High Specification
- 24 Hour Concierge
- Residents Spa — Gym & Swimming Pool
- Available 15th December 2025



Fairwater House

Approximate Gross Internal Area = 850 sq ft / 79 sq m
Patio = 25 sq ft / 2.3 sq m

GARTON JONES
LONDON

**Ground Floor**

This plan is not to scale and must be used as layout guidance only. All measurements and areas are approximate and should not be relied upon to provide accurate information. This plan must not be relied upon when making property valuations, design considerations or any other such relevant decisions. We accept no responsibility or liability (whether in contract, tort or otherwise) in relation to any loss whatsoever arising from or in connection with any use of this plan or the adequacy, accuracy or completeness of it or any information within it.



